

# Community Needs Assessment | Recreation & Quality of Life



## NEEDS AT A GLANCE

**Better Access to Parks & Playgrounds**

**Connections Between Greenways**

**Accessible Recreation for All Ages**

**Better Access to the Blue Ridge Parkway & Explore Park**

## EXISTING CONDITIONS

Recreation and quality of life in Vinton are closely connected to the broader Roanoke Valley region. Vinton is situated along an expansive regional greenway network that was initially formed in 1995 to improve quality of life for residents throughout the region. Vinton is home to three greenways, Glade Creek Greenway, Gladetown Trail, and Wolf Creek Greenway. There are nine parks within the Town, which are owned and maintained by Roanoke County. Vinton is also along the Roanoke River Blueway with an access point off 3rd Street at Tinker Creek. The Blueway is 45 miles long and extends from Montgomery County to Smith Mountain Lake.

### LEGEND

- Existing Greenways & Trails
- Proposed Greenways & Trails
- Parks/Open Space Areas
- Waterbodies
- Streets
- Jurisdictions

Source: Town of Vinton GIS, Roanoke County GIS, and RVARC

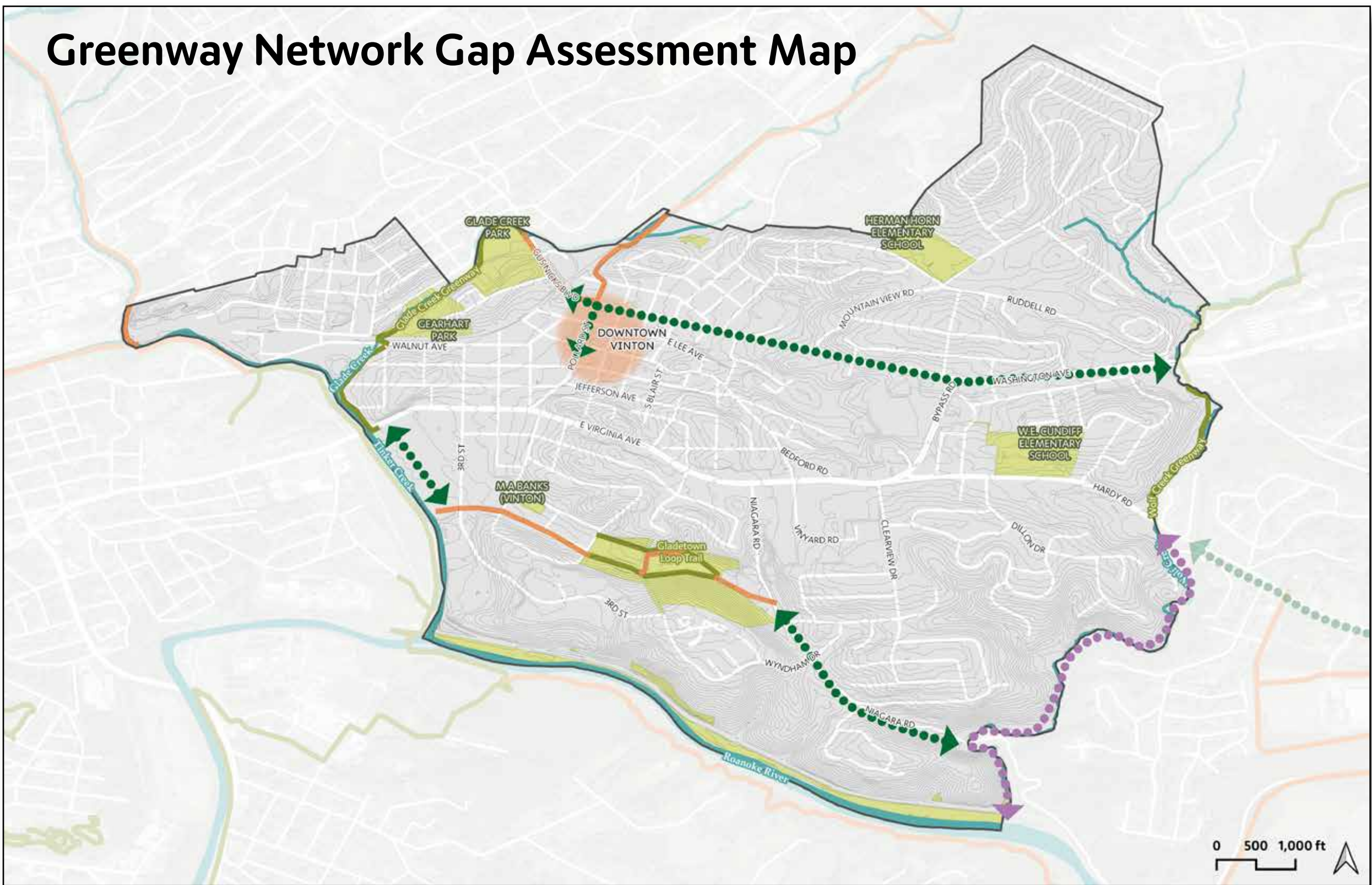
### LEGEND

- Greenway Gaps
- Greenway Gaps Addressed by Proposed Extension
- Greenways
- Proposed Greenway Extensions
- Parks
- Waterbodies
- Streets
- Topography

Source: RVARC and Roanoke County GIS

Vinton's greenways are situated along the eastern and western edges of Town. Pedestrians and cyclists primarily rely on sidewalks and streets to access greenways. The map below highlights where connections are needed to improve access to the greenway network.

### Greenway Network Gap Assessment Map

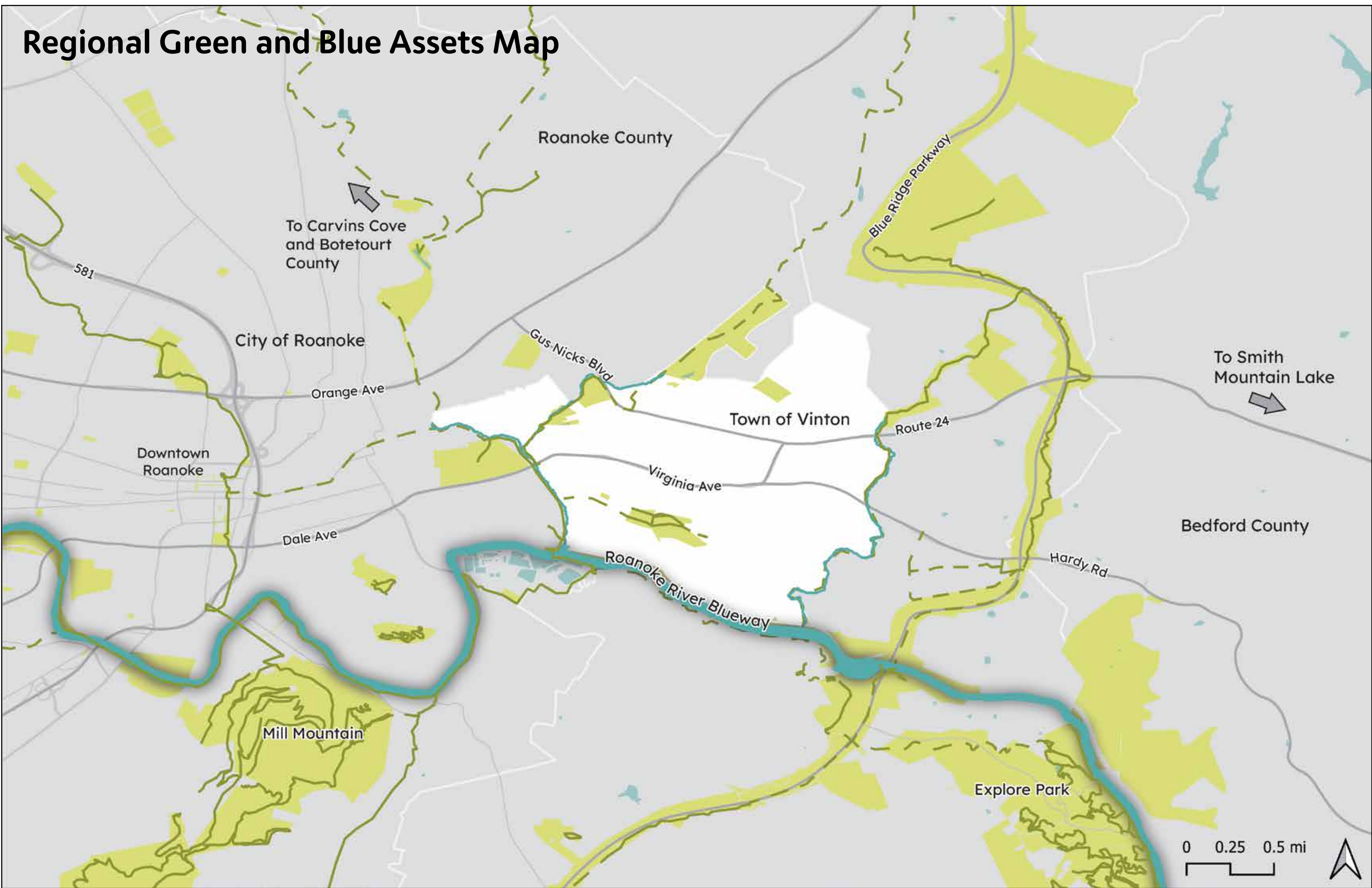


### LEGEND

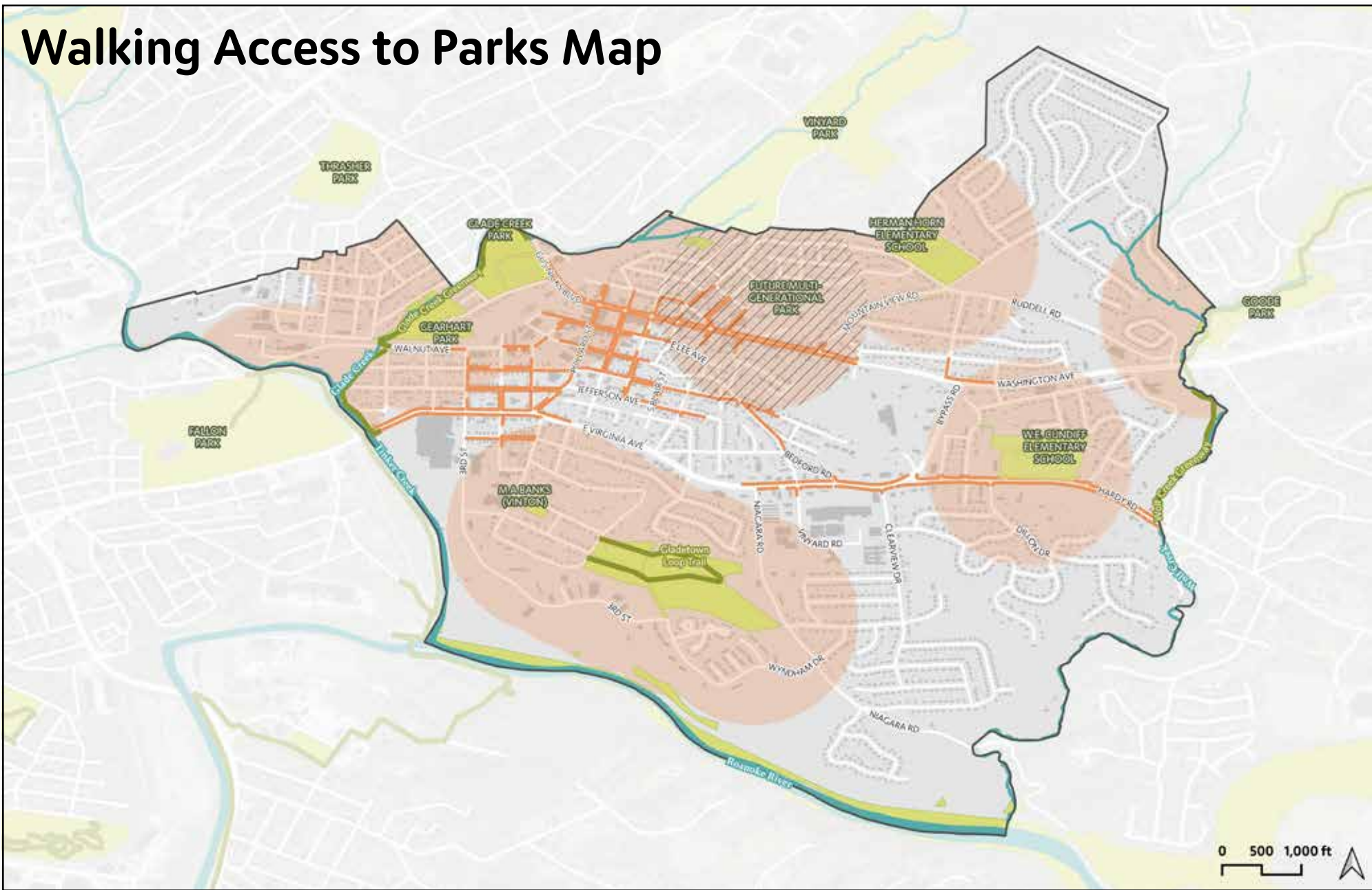
- Quarter-Mile Park Walksheds
- Quarter-Mile Walksheds for Future Parks
- Parks
- Sidewalks
- Greenways
- Waterbodies
- Streets
- Building Footprint

Source: Town of Vinton GIS and Roanoke County GIS

### Regional Green and Blue Assets Map



### Walking Access to Parks Map



### PARKS INVENTORY

Facilities	M A Banks	Craig Recreation Center	Gearhart Park	W. E. Cundiff Elementary School	Herman L. Horn Elementary School	Vinyard Park West
Playground	✓			✓	✓	✓
Picnic Shelter			✓		✓	✓
Picnic Tables	✓				✓	✓
Basketball Court	✓				✓	✓
Water Fountain	✓					✓
Soccer Field				✓		✓
Restrooms or Portable Toilet	✓		✓			✓
Baseball/Softball Diamond			✓		✓	✓
Walking Trails		✓			✓	✓
Grill	✓					
Horseshoes	✓					
Indoor Facilities		✓				